

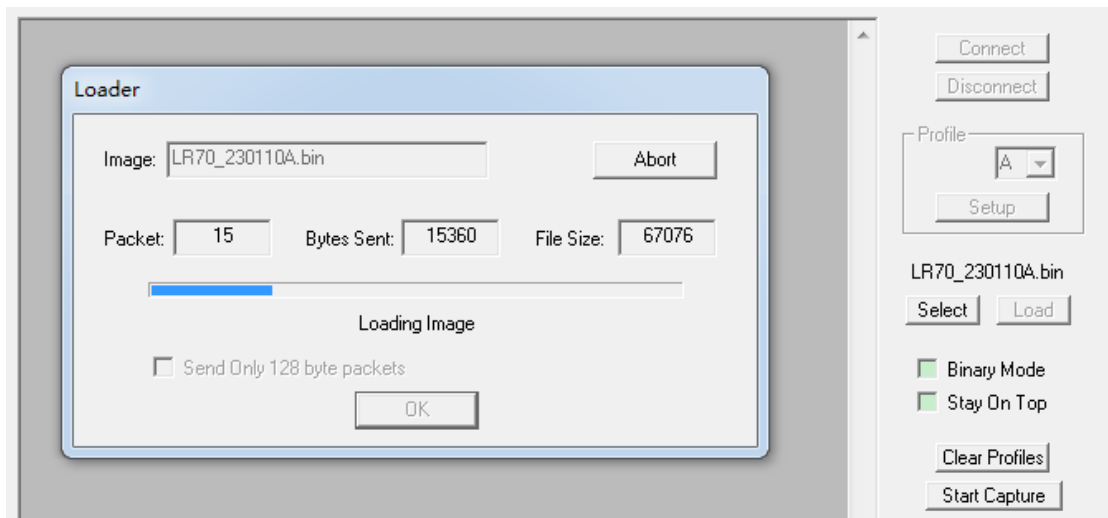
LR70 FW Update Application Note

Upload new files as follows:

1. Enter "1" from the flashloader menu



2. Press Load



3. After load is complete, enter "3" and then "1" Run FW

```
Done. 67076 bytes

Select type of file to upload
1. Application/Executable
2. Generic
#

Main Menu
1. Upload File
2. Delete File
3. Run Application
4. Default Application
5. Undefault Application
6. List Files
7. Advanced Menu
#3
Run Application
1. 67076 x LR70_230110A.bin
#1
System power on!
AT+AB -CommandMode-
AT+AB MACaddress 00043e261122
```

4. Set the default executable application

```
ACH Flashloader 1.7.0 - 2022.09.22
CPU 200 MHz

Press space to repaint menu.
Press CR to go back one menu.
Main Menu
1. Upload File
2. Delete File
3. Run Application
4. Default Application
5. Undefault Application
6. List Files
7. Advanced Menu
#4
Default Application
1. 67076 x LR70_230110A.bin
#1
```

5. Then reset or power it on again to directly run the FW