

BLE FW Update Guide

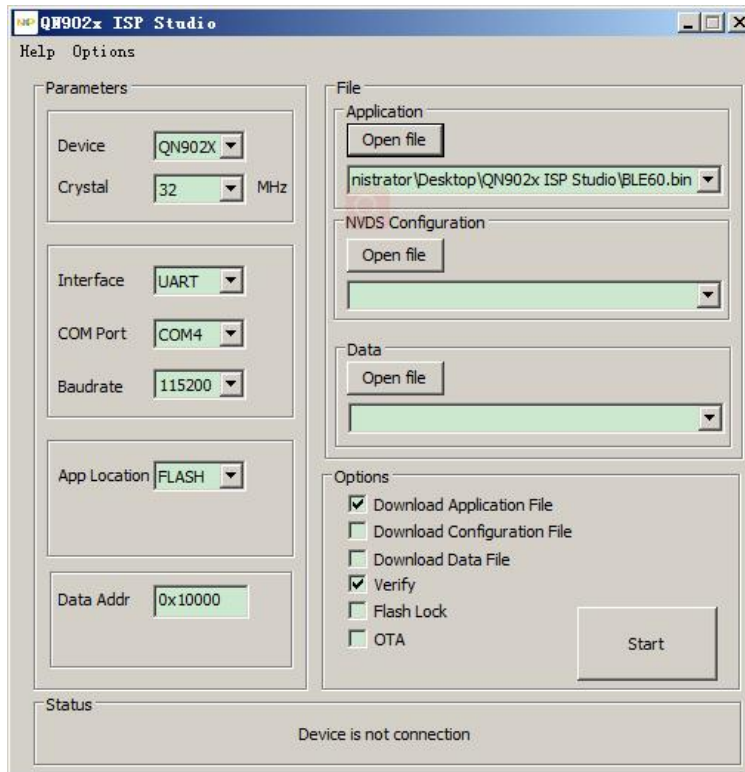
Amp'ed RF Technology, Inc.

Update the firmware on a BLE60 module. Tools needed:

- QN902x ISP Studio
- Windows PC
- COM port on PC
- Level shifter for RS232

Steps:

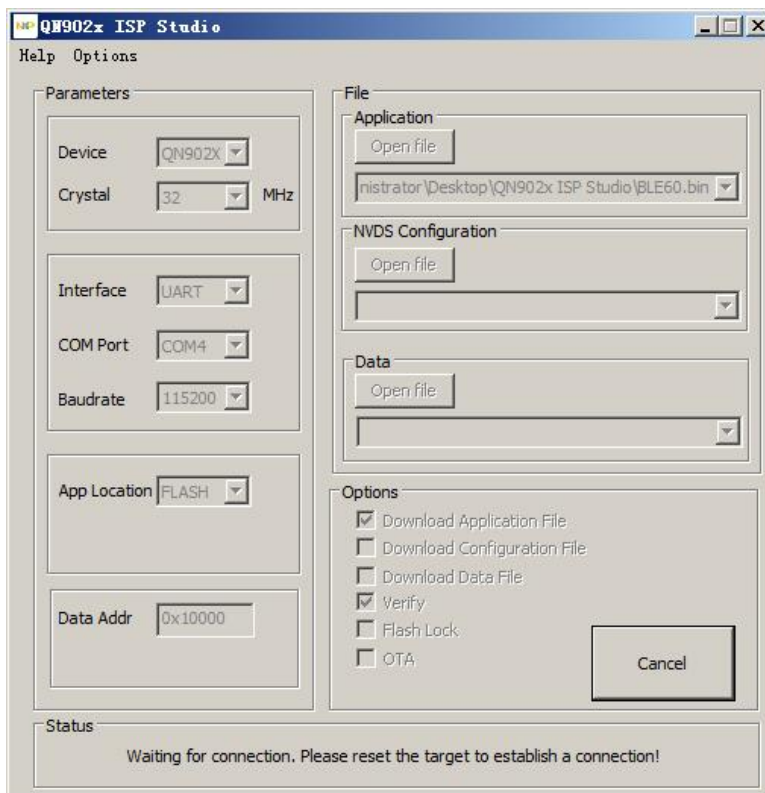
1. Connect UART0, pins 5 & 6, to PC using a RS232 level shifter with common ground, and power on the module.
2. Run "QN902x ISP Studio v1.30.exe" on PC.



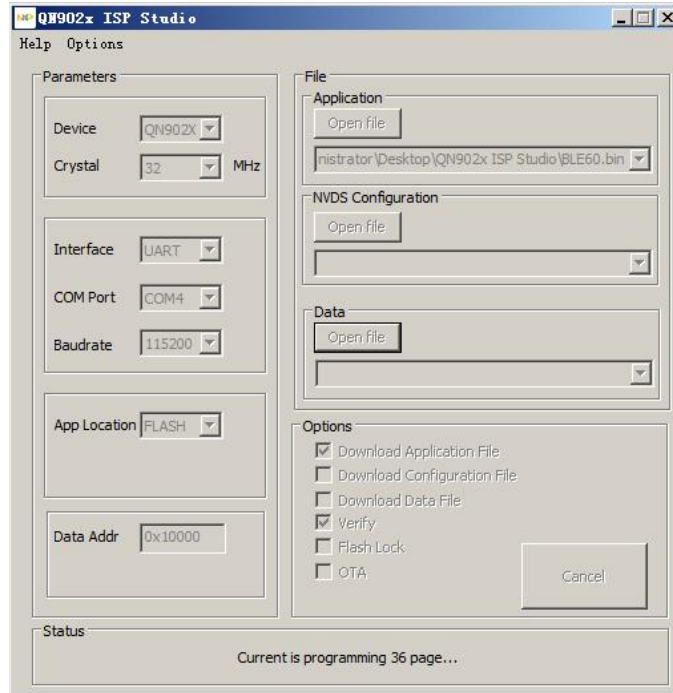
Settings:

- Crystal: 32MHz
- Com Port: *Select the correct port*
- Baudrate: 115200bps
- App Location: FLASH
- Data Addr: 0x1000
- Application: *Select bin file for download*

3. Click "Start" button.



4. Assert the Fast boot, pin 9, low. This will turn off the fast booting mode and allow the ISP to communicate with the module.
5. Assert the RESETN, pin 10, low for at least 50us to reset the module.



6. Wait for download complete.

